

Logistics Association of Sustainable Intermodality







## HEADQUARTERS

### GRIMALDI PALACE, ROME

From October 17, 2016, the Palace, located in Via Rasella 157 and owned by the Grimaldi family, is the main office of ALIS, Logistics Association of Sustainable Intermodality. Inside the building there is the temple of Sant'Andrea degli Scozzesi.

This place of worship, now deconsecrated, was built together with the adjoining convent and college of the Scottish in 1592 by order of Pope Clement VIII.

## THE NETWORK:



**1.365**

ASSOCIATED COMPANIES



**105.500**

VEHICLES



**151.000**

EMPLOYEES



**140.300**

ANNUAL MARITIME CONNECTIONS



**120**

MOTORWAYS OF THE SEA



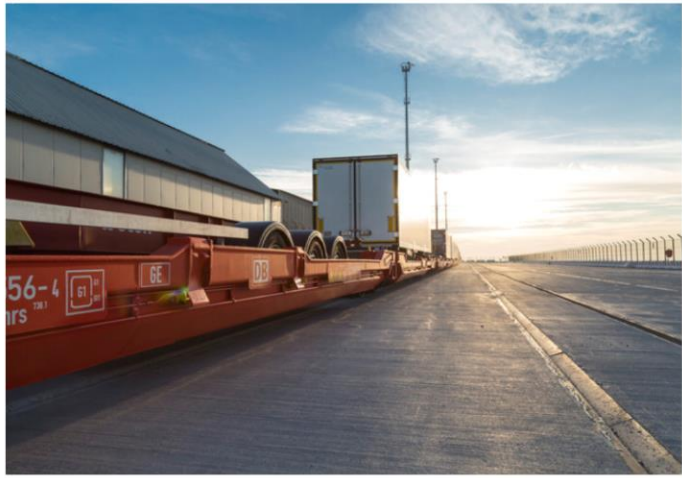
**200**

OFFICES



ALIS is an innovative association gathering entrepreneurs, determined in solving issues and problems of the intermodality & logistics sector with a spirit of proactive collaboration aimed at achieving the satisfaction of final consumers through an increasingly efficient, competitive and sustainable service.

ALIS supports intermodality, a valid and concrete solution for the sustainable logistics of our country, thanks to consolidated and successful services



# MISSION

**HIGHLIGHTING** the entire sustainable logistics chain from an institutional, political and media perspective

Having a **VOICE** able to give concrete answers to the intermodal logistics sector

Being the **EXPRESSION** of an Italy that promotes the development of intermodality and an environmentally sustainable transport

Realize an **EFFICIENT** and global system aimed at supporting the simplification of the activities that represent this sector.

## AMONG ALIS MEMBERS...

**Finnlines**  
a Grimaldi Group company

**GRIMALDI LINES**

**MINOAN LINES**  
a Grimaldi Group company

**BluNavy**  
la compagnia di navigazione elbana

**Rail Cargo Group**  
Member of ÖBB

**CARONTE & TOURIST**  
s.p.a.

**MALTA MOTORWAYS OF THE SEA**

**siremar**

**TTT Lines**  
COMPAGNIA DI NAVIGAZIONE



# GOALS

Through **INTERMODALITY**, the logistics of road haulage companies can benefit of capillary connections connecting Italy with the entire Europe through a dense network of maritime, land and railway connections.

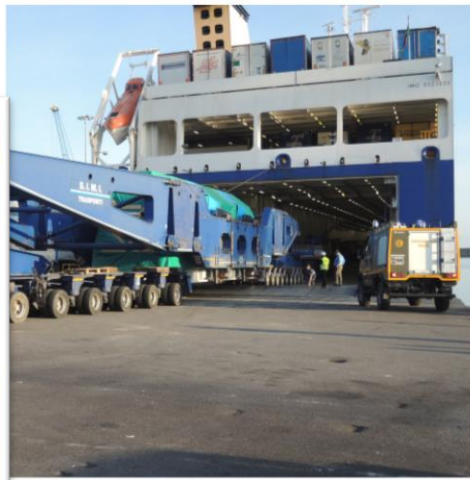
Thanks to the synergy between train and sea, ALIS will create new corridors and routes:

*Germany > Venice > Greece*

*Belgium > Malta, Southern Italy and Islands, Spain, Morocco*

*Spain > Balkans*





# OBJECTIVES

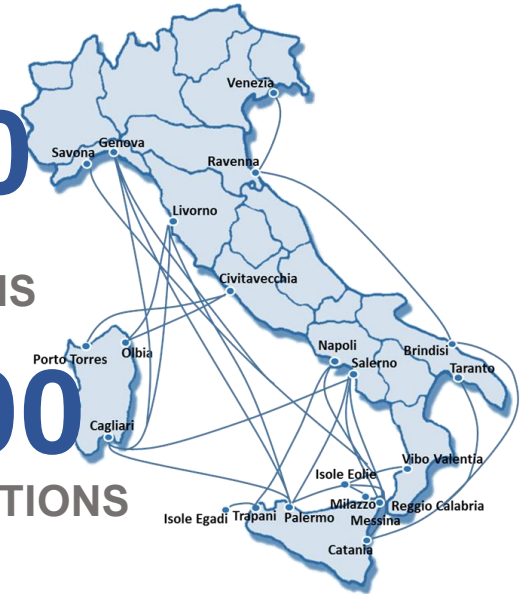
TERRITORIAL CONTINUITY  
WITH ISLANDS

Ecco come colleghiamo Sardegna e Sicilia  
I porti serviti dall'ALIS

Brindisi	Olbia
Cagliari	Palermo
Catania	Pantelleria
Civitavecchia	Porto Torres
Genova	Ravenna
Isole Egadi	Reggio Calabria
Isole Eolie	Salerno
Livorno	Trapani
Messina	Venezia
Milazzo	Vibo Valentia
Napoli	Villa San Giovanni

2.700  
WEEKLY  
CONNECTIONS

140.300  
ANNUAL CONNECTIONS





# OBJECTIVES

## SOUTHERN-ITALY DEVELOPMENT

Italy will not grow if Southern Italy does not grow. The reduction of the gap between the North and the South of the country in terms of logistics, economy and infrastructures, is a top priority for ALIS.

The **DEVELOPMENT OF SOUTHERN ITALY** will favor not only Southern Italy companies but also the Northern ones: thanks to the infrastructural development and the efficiency of intermodal and sustainable logistics, they will be able to concretely expand their markets.



INTERMODALITY GROWTH THANKS TO  
ALIS

+23%

Co2 EMISSIONS REDUCTION

-1.2 MLN  
tons



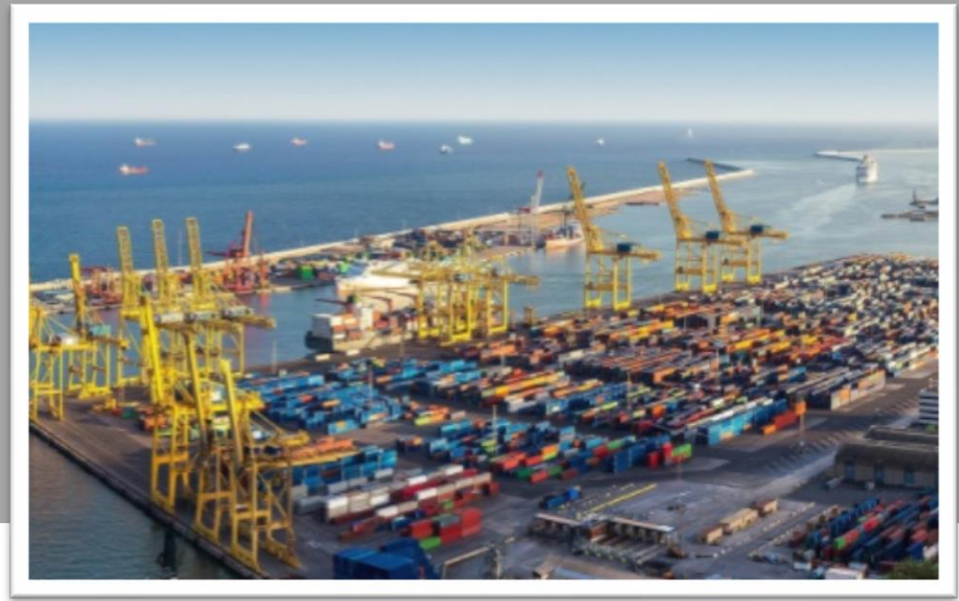
## OBJECTIVES

Co2 EMISSIONS REDUCTION

Our commitment is to promote the development of a sustainable transport logistics system through the use of intermodality. Road transport is indeed responsible for around 30% of CO2 emissions annually produced in Italy.

Together with our associates, we have removed from our roads, moving on intermodal routes greater than 600km, 1.500.000 trucks per year, equal to 40 million tons of goods transported less over the entire national road network





# CS MARE



*Fondazione CS MARE*

ALIS cooperates with CS MARE to promote ALIS members' interests in European institutional relations.

CS MARE Foundation is born to contribute realizing some of the most important European priorities: de-carbonization and clean energy, Blue Economy, ICT and digitalization, skills agenda and development of new competences.



ALIS cooperates with IRU, the world association of road transport.

We are engaged at international level to implement the use of electronic CMR, becoming with ALIS SERVICE the unique promoter in our country of that technology that will simplify the business activities of our entrepreneurs: innovation and technology for rapid stop to bureaucracy obstacles.





# TRANCHED COVER ALIS

## OBJECTIVES

The agreement with Medio Credito Centrale and Monte dei Paschi di Siena is in its implementation phase. The Association, in agreement with the two banks, is developing the procedural guidelines in order for the members to access the portfolio that will constitute the first Tranché Cover ALIS, which will have an initial endowment of 100 million euros.



## ALIS Europe

The constitution of ALIS Europe will allow us to implement the European activities in 2019, pursuing the Association's aims also in the European context. Lobbying activity will become increasingly intense: institutional and technical meetings will be already held in the coming weeks.



AN EXTRAORDINARY EXAMPLE OF REPRESENTATION AND  
**INTEGRATION OF THE ENTIRE LOGISTICS CHAIN:**  
*SCHOOLS, UNIVERSITIES, TECHNICAL INSTITUTES,  
COMPANIES 4.0, PORTS AND INTERPORTS.*

**A SOLID NETWORK THAT CREATES JOBS**



ALIS has felt the need to give form, substance and identity to a large associative project to promote the professional and business growth of its members, gathering all transport operators towards common goals.

Thanks to the recent adhesion of ports, interports and universities, ALIS is today a unique example of integration in the logistics chain



# PORTS

MEMBERS OF ALIS

**Taranto**

**Naples**

**Salerno**

**Castellammare di Stabia**

**Venice**

**Chioggia**

**Catania**

**Augusta**

**Messina**

**Palermo**

**Trapani**

**Porto Empedocle**

**Termini Imerese**

**Bari**

**Brindisi**

**Manfredonia**

**Molfetta**

**Monopoli**

**Civitavecchia**

**Fiumicino**

**Gaeta**

**Barcelona (SP)**

**Valencia (SP)**

**SÈTE (FR)**





# INTERPORTS

MEMBERS OF ALIS

**Interporto Toscano Amerigo Vespucci S.p.a.**

**Ce.P.I.M s.p.a. - Interporto di Parma**

**Interporto di Bologna S.p.a.**

**Interporto di Vado Ligure**

**Interporto Quadrante Europa, Consorzio ZAI, Verona**

**Interporto Centro Italia Orte S.p.a**



# UNIVERSITIES & TECHNICAL INSTITUTES

MEMBERS OF ALIS

**University of Bari**

**University of Salerno**

**University Parthenope - Naples**

**University of Montenegro**

**I.T.S Duca degli Abruzzi Catania**

**I.T.S Pegasus Reggio Calabria**

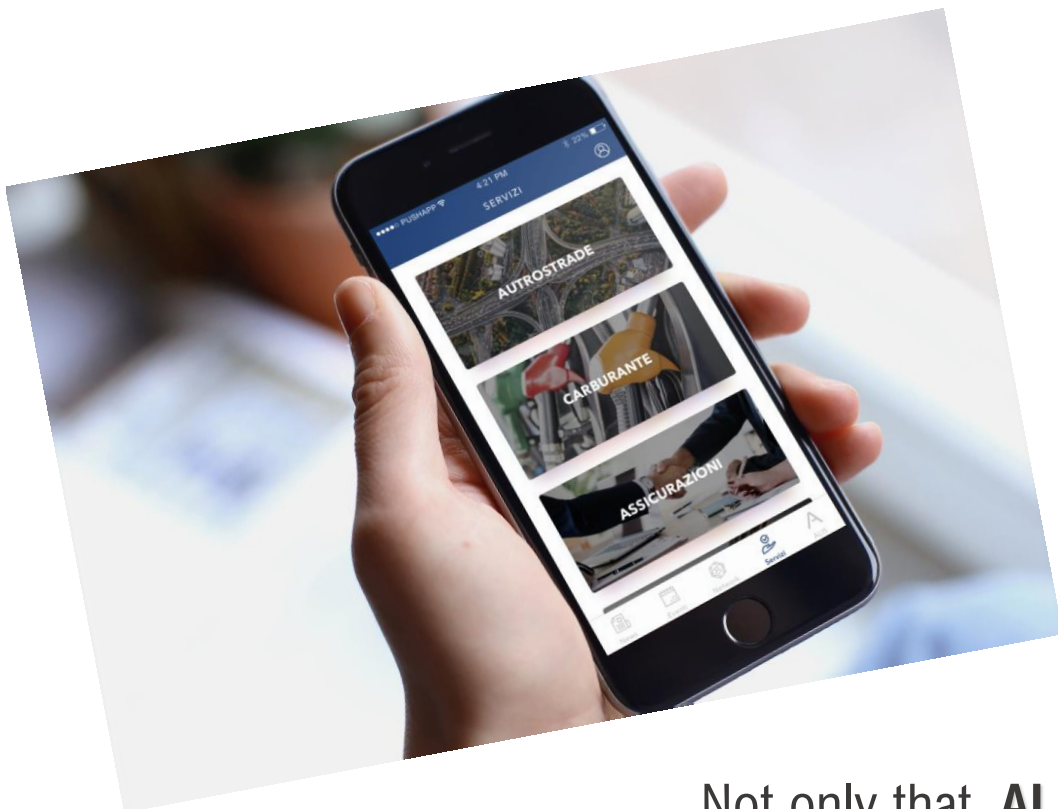
**I.T.S Taranto**

**I.T.S MOSOS Cagliari**

**I.T.S Agroalimentare Viterbo**

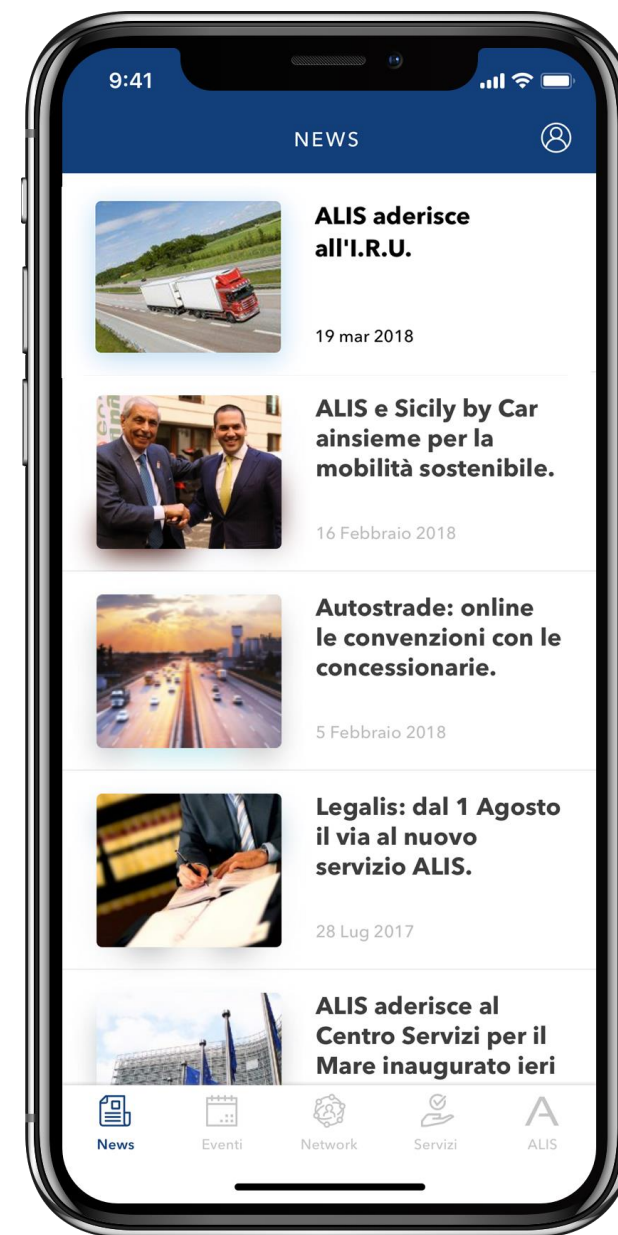
**I.T.S Made in Italy Viterbo**





Not only that, **ALIS** means also digitalization.

With its new **APP**, **ALIS** today represents a step forward towards the future : services and information just a click away. Speed and efficiency to support intermodality. With ALIS we have understood the urgencies of workers and companies, representing their real needs.





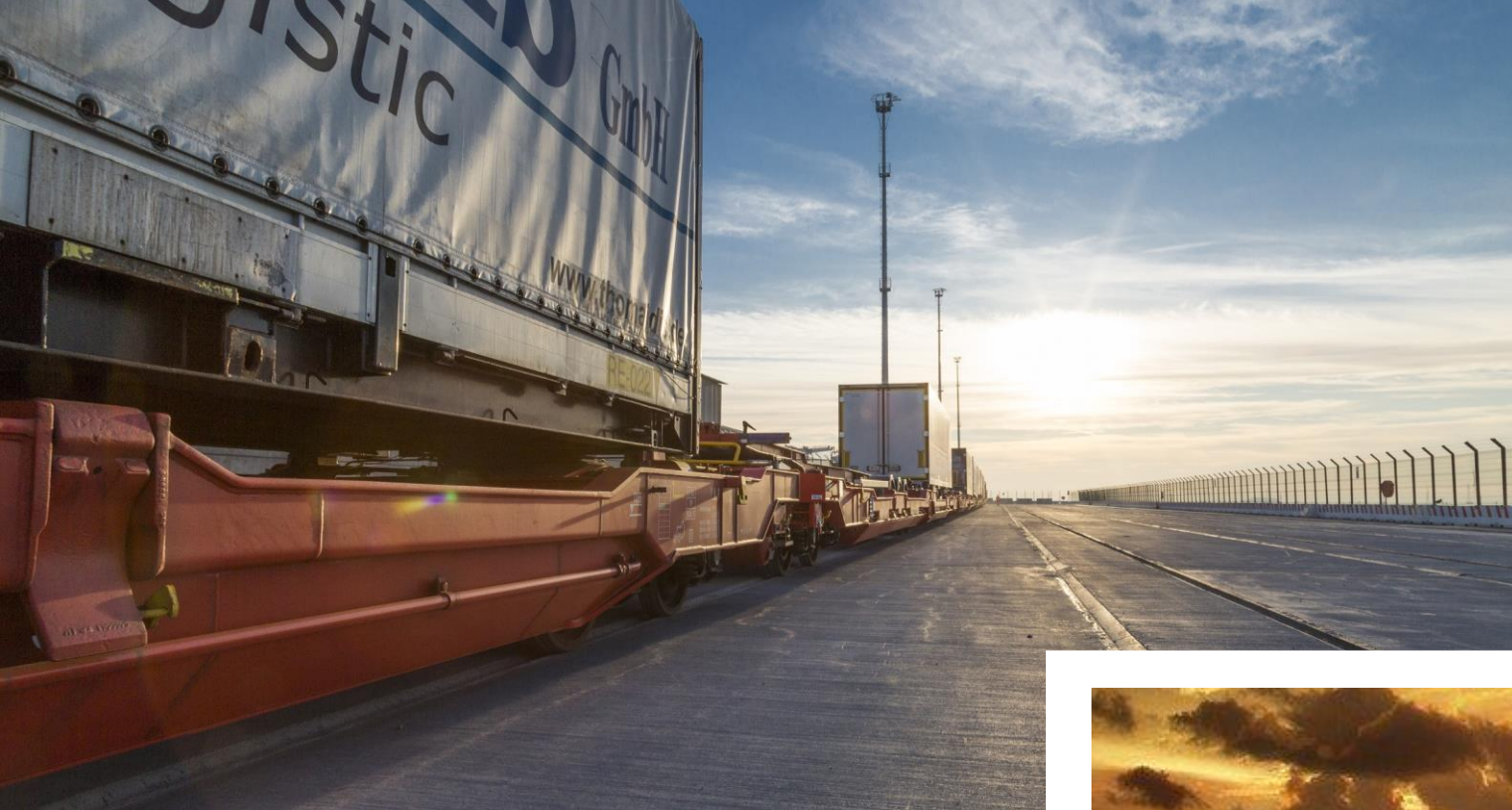
ALIS

Via Rasella 157 – 00197 Rome  
Tel. +39.06.8715371 | mail [info@alis.it](mailto:info@alis.it)

Follow us on







*Thank you!*

Guido Grimaldi, ALIS President

