

Port of Antwerp - Bruges, smart port and innovations

Ms. Kirsti Gjertsen
Segment Manager Automotive

ECG AI-day
July , 8th 2025





**A global port
in the heart of Europe**

One port
Two sites



**Port of
Antwerp
Bruges**





Total throughput
271mio ton/ year



Largest **car handling**
port in the world
+3,5 mio
vehicles/ year



Largest **chemical**
hub in Europe



15% of EU **gas** market



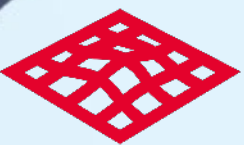
Important **cruise**
port in Benelux
+300,000 passengers



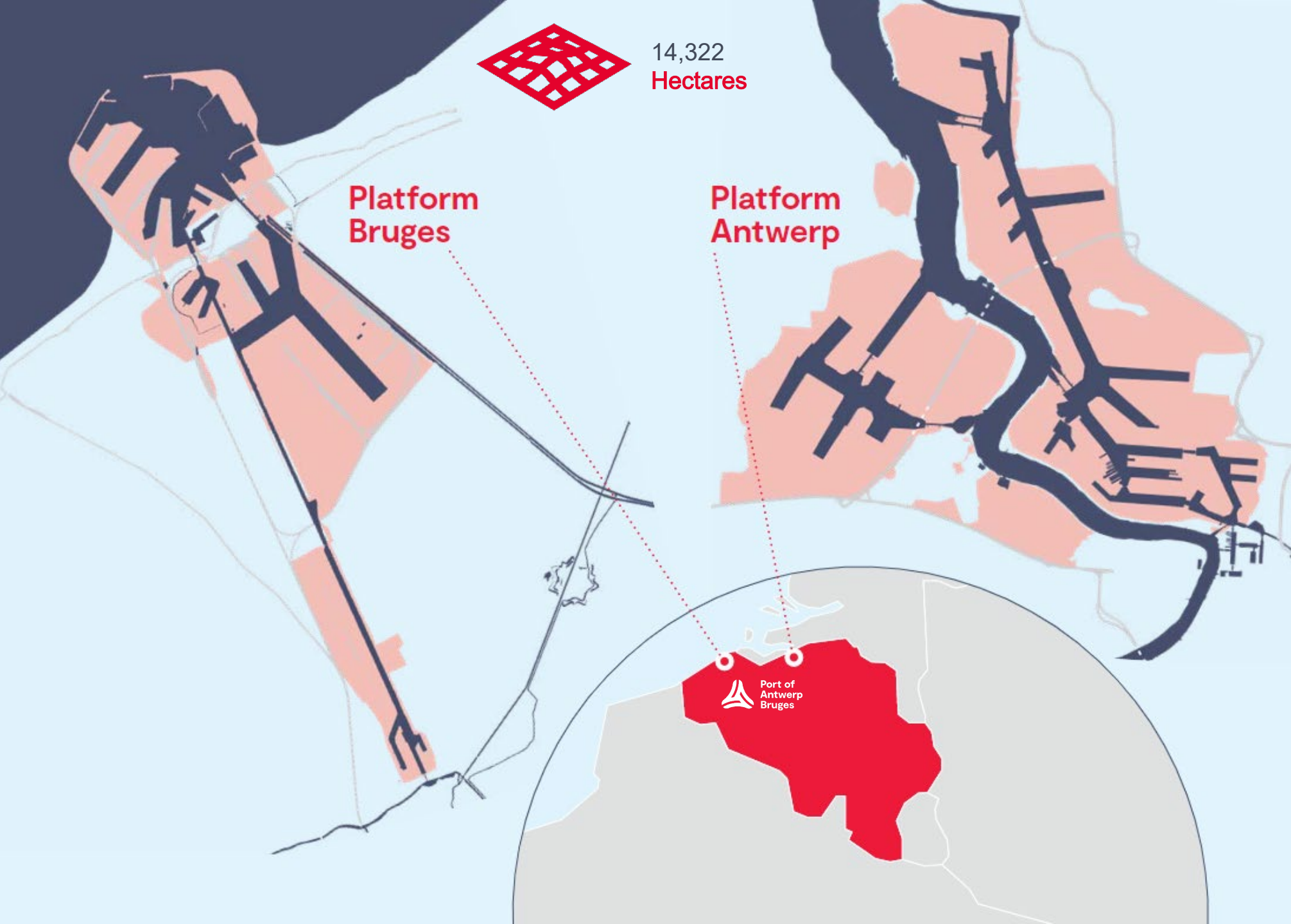
164,000 **jobs**
Direct and indirect



1,400
Companies



14,322
Hectares



**Platform
Bruges**

**Platform
Antwerp**



Port of
Antwerp
Bruges

How to become a 'smart port'?

Five pillars that guarantee long-term impact



Integrated port operations



Adaptive modal shifts



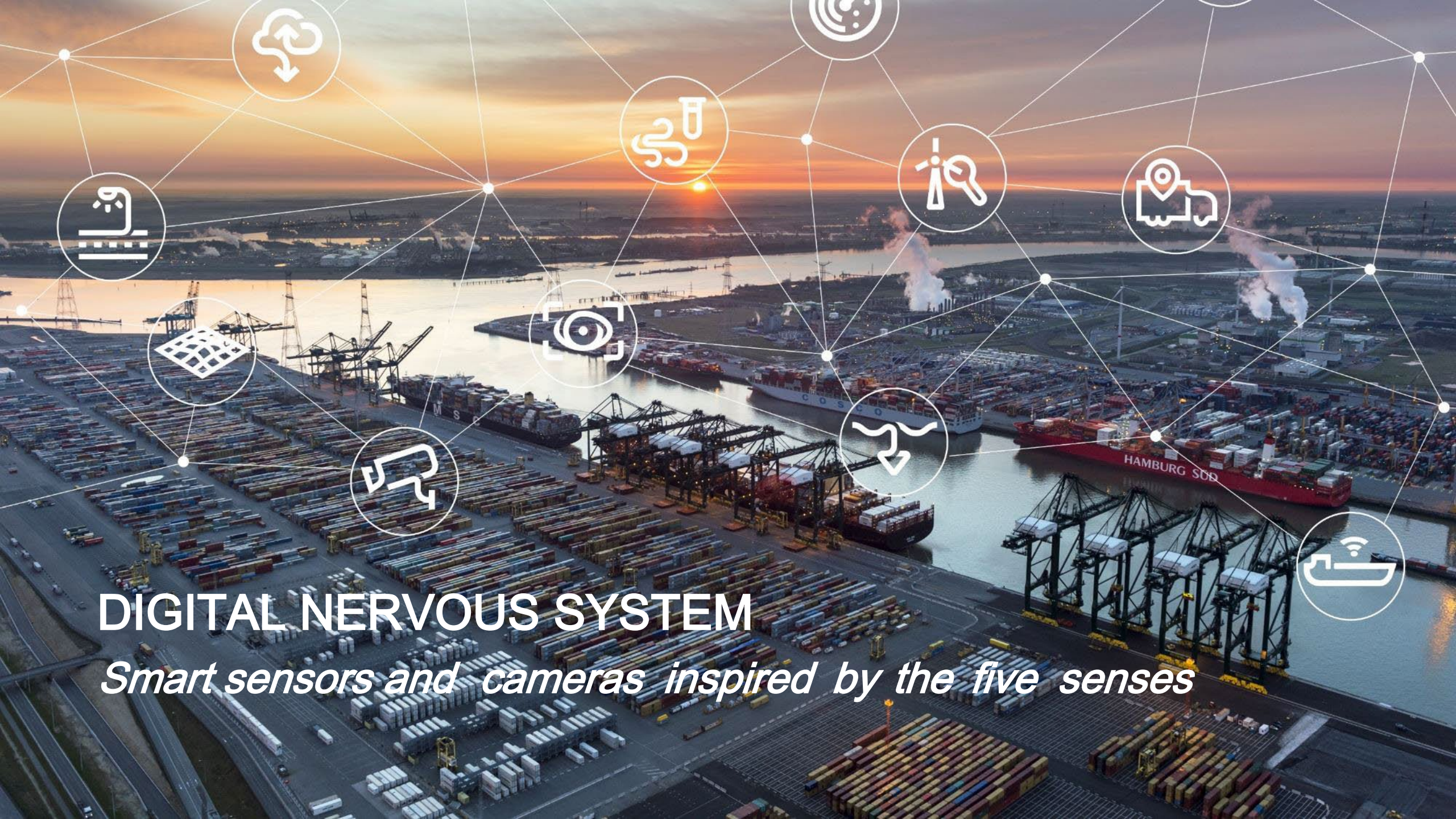
Security



Impact on climate
and ecology

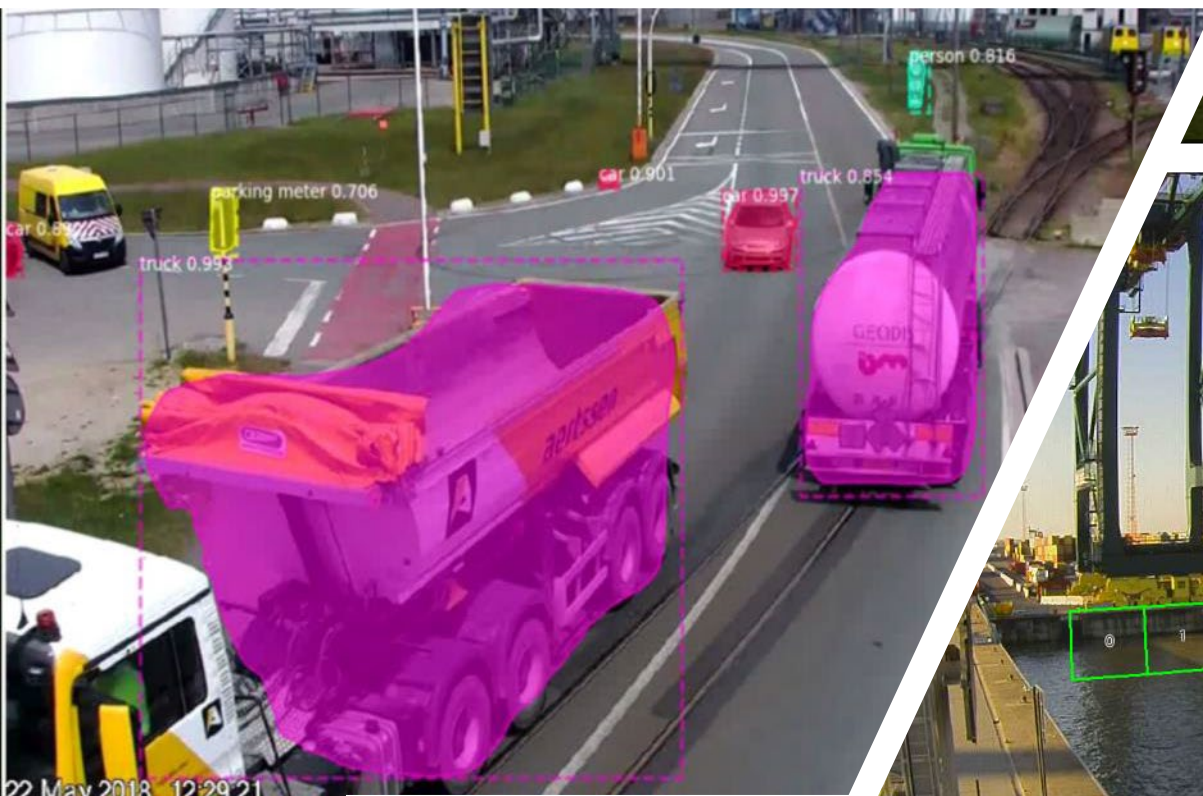
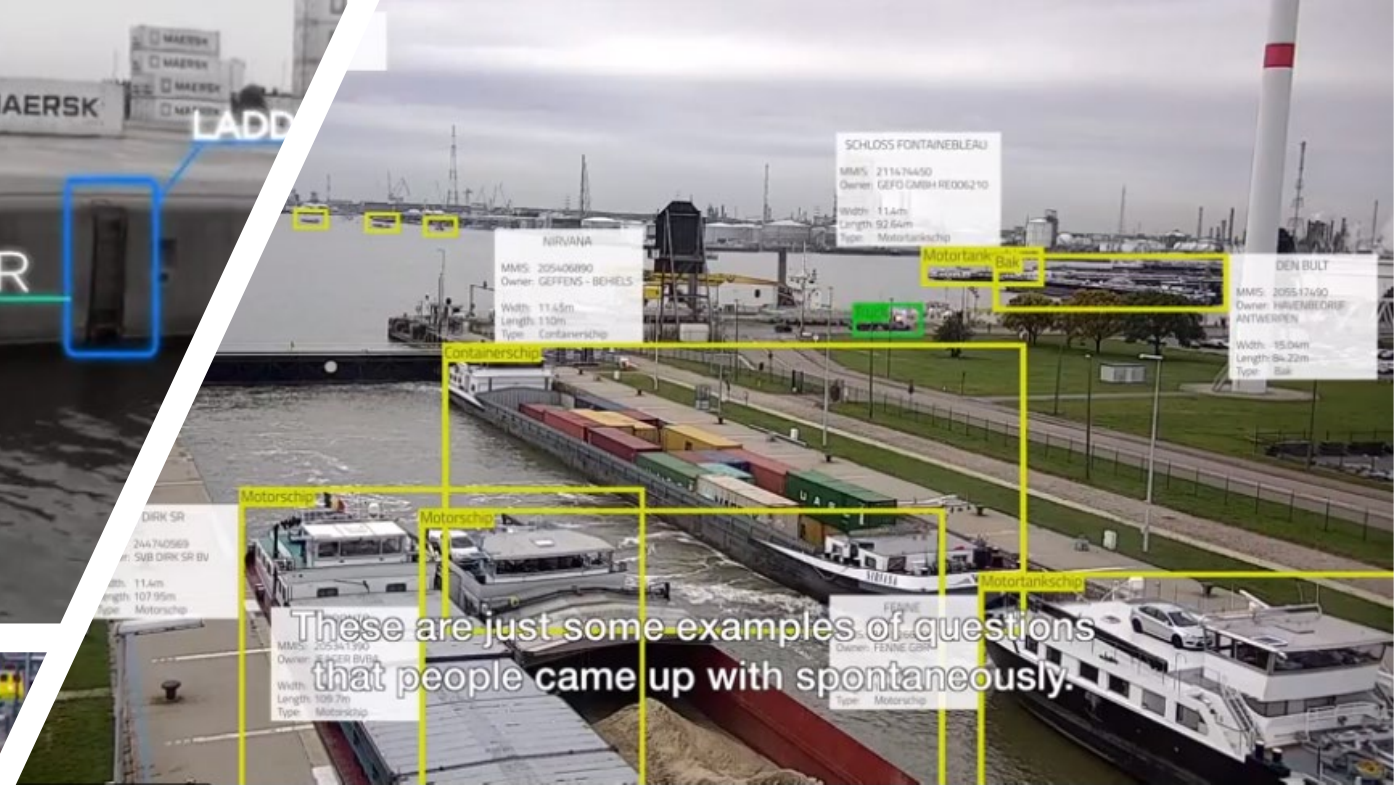
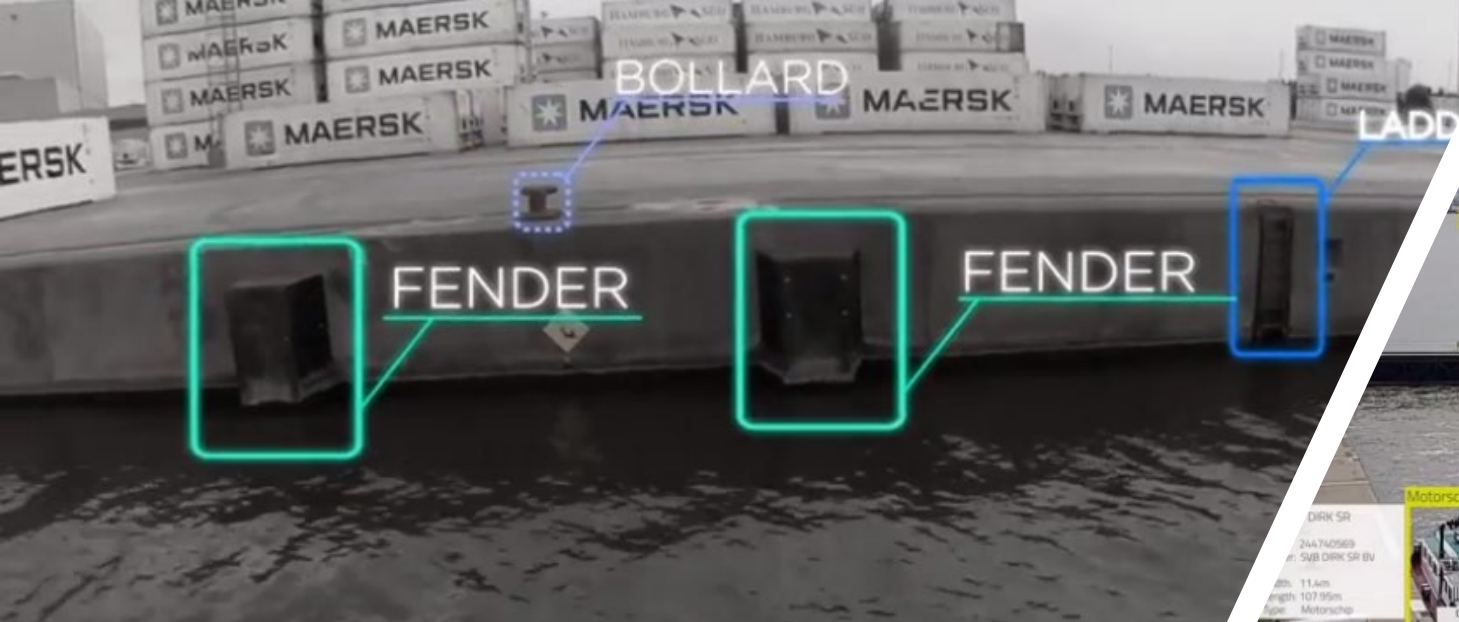


Digital talent and
ecosystems




DIGITAL NERVOUS SYSTEM

Smart sensors and cameras inspired by the five senses

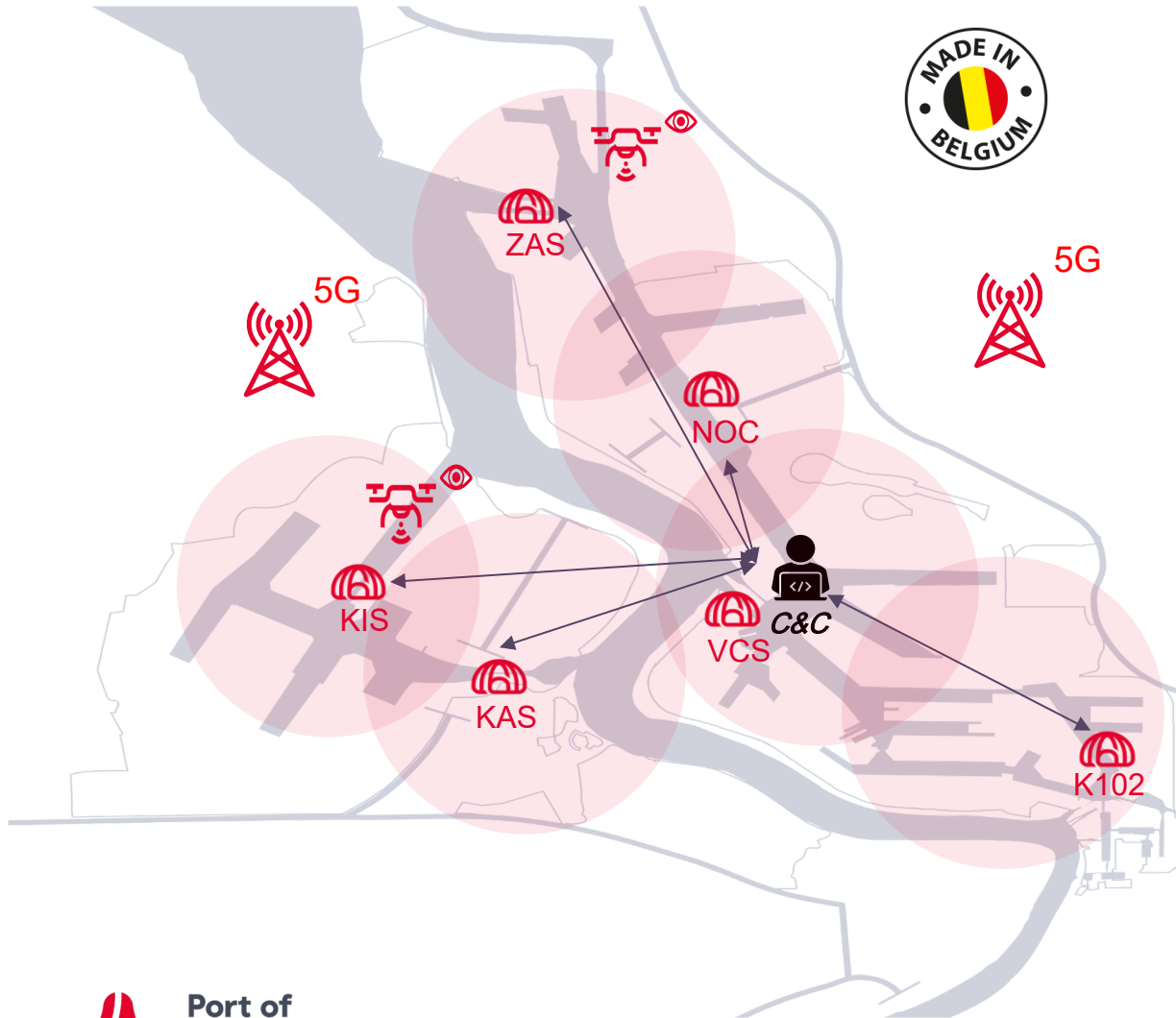






“The smart port has a network of autonomous drones that fly beyond visual line of sight several times a day and transmit data in real time”

Drones – Europe's first recognised 'U-space'



- 'D-Hive' network of 6 automated drones (2021)
- 'Drone as a service': 18 flights a day 24/7
- 'Beyond Visual Line of Sight' (BVLOS) operations above water
- PoAB as Europe's first recognised 'U-space' or airspace for drones (2025)



Antwerp Port information and control assistant (APICA)

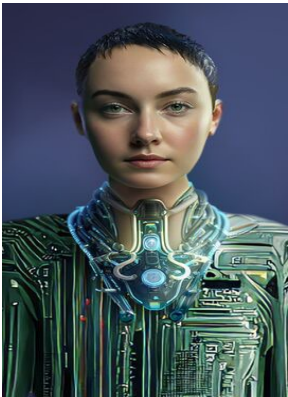
Digital Twin



AI-planning prediction



3D-avatar



AI-Chatbot

15:40

APICA can you tell me more on PSA

APICA 15:40 Vertalen

PSA International (PSA) is a leading global port group and a trusted partner to cargo stakeholders. With flagship operations in PSA Singapore and PSA Antwerp, the group's global network encompasses 160 locations in 42 countries around the world. A few key points about PSA:

1. **Global Presence:** PSA operates in many key hubs around the world, including major ports in Europe, Asia, and the Americas. This extensive network allows them to facilitate global trade efficiently.

2. **Sustainability:** PSA is committed to sustainable development and actively seeks to reduce its environmental footprint through green initiatives and innovative technologies.

3. **Technology and Innovation:** PSA invests in state-of-the-art technologies like automated guided vehicles, port management systems, and other smart logistics solutions to optimize port operations and enhance efficiency.

4. **Customer-Centric Solutions:** PSA aims to provide seamless and efficient services to its customers, partnering with stakeholders to deliver integrated and value-added solutions in the supply chain.

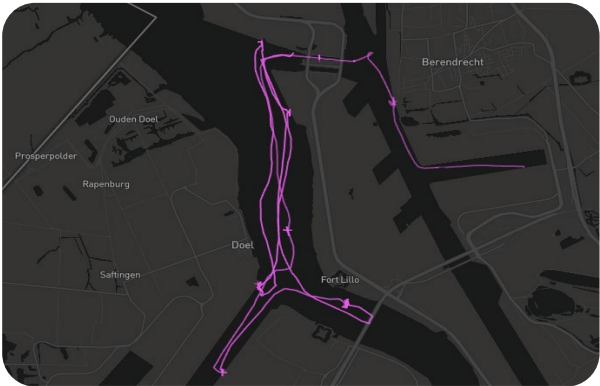
5. **Awards and Recognition:** PSA has been recognized with numerous awards for its outstanding performance and contributions to the port industry.

For more specific or detailed information, you can visit PSA International's official website or reach out to their customer service team.

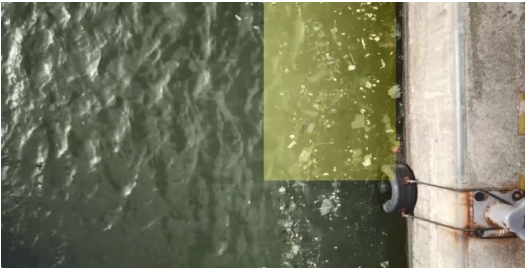
Verander Topic

Typ een bericht

AI-Anomaly detection



AI-smart camera tech





Digital twin

Geographic
Information System
(GIS)

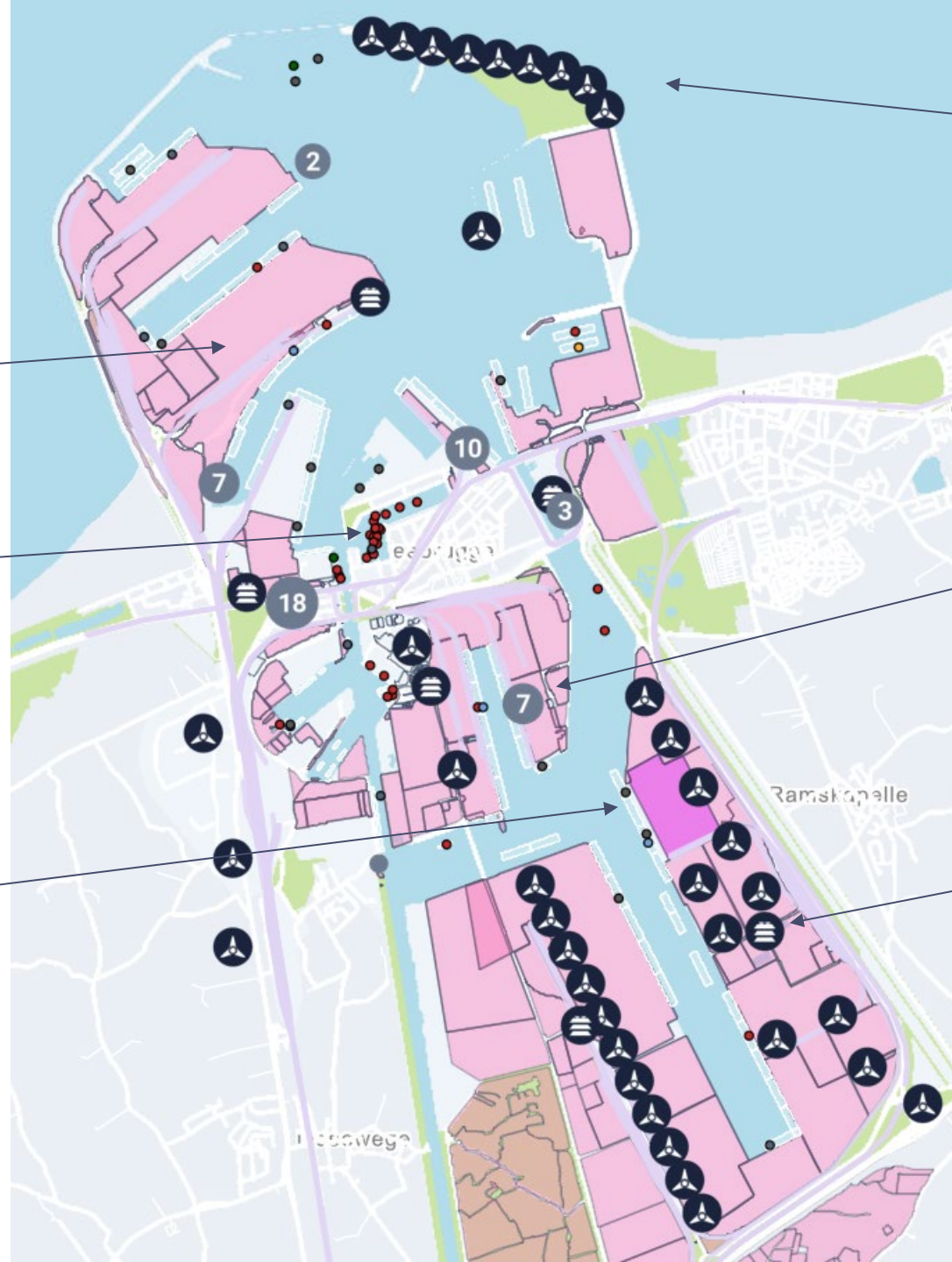
Automatic
Identification
System (AIS) =
vessel tracking
data

Mooring locations

Windmill info

Nautical management
broadcast messages

Air quality
monitors



Filters ✕

Schepen ▾

Scheepsnaam

Diepgang

min max

Apica type schip

Kies een optie ▾

Apics schip code

Bedrijf

Bedrijf sleepboot

Kies een optie ▾

☒ Enkel PoAB vloot

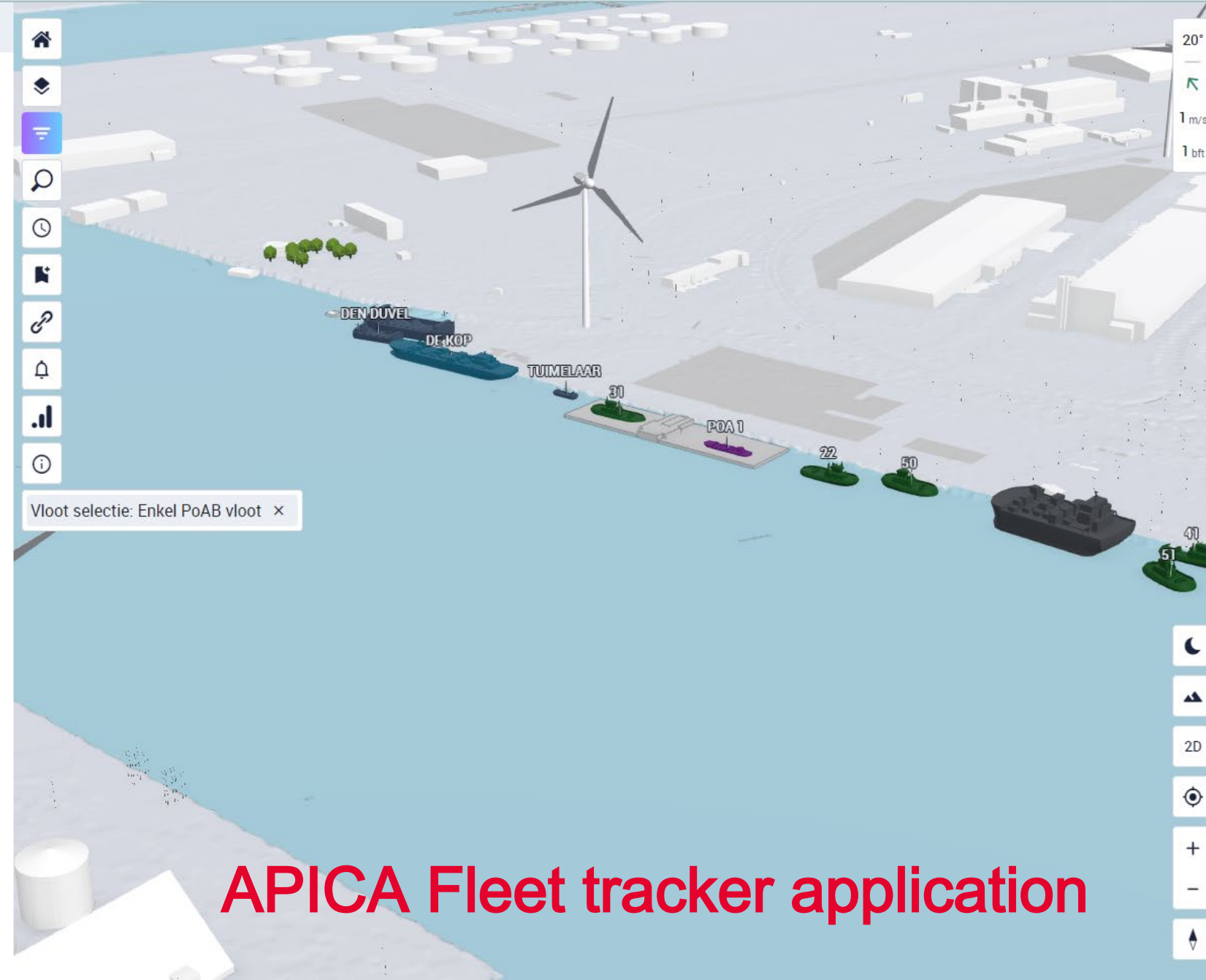
Windmolens ▾

Leverancier

Kies een optie ▾

Bewaren als bladwijzer

Filters toepassen



Vloot selectie: Enkel PoAB vloot ✕

51 ↻ ✕

MMSI nummer	205094000
Snelheid	0 m/s
Heading	172.001923°
Berekende heading	172°
Koers over de grond	0,2°
Bestemming	
Haven van herkomst	
Haven eindbestemming	
Geschatte tijd	
Berekende tijd	
Type schip	Sleepboot
Bedrijf	PORT OF ANTWERP-BRUGES
Code	TUG
Lengte	24,73m
Breedte	13,13m
Diepgang	5,5m
Stationair sinds	14-09-2023 09:13:37
Imo nummer	9890123

APICA Fleet tracker application

SEAFAR

- Remote Pilot Shipping
- Shore Control Center



Port of
Antwerp
Bruges



**Ush and Poppy Mobility
Remote-controlled rental cars in Antwerp port area**

PORT of the FUTURE

Autonomous summit



**Port of
Antwerp
Bruges**

16 sept – 10u tot 17u

Port of Antwerp-Bruges – K102

Contact:
Kirsti.gjertsen@portofantwerpbruges.com